

amasty

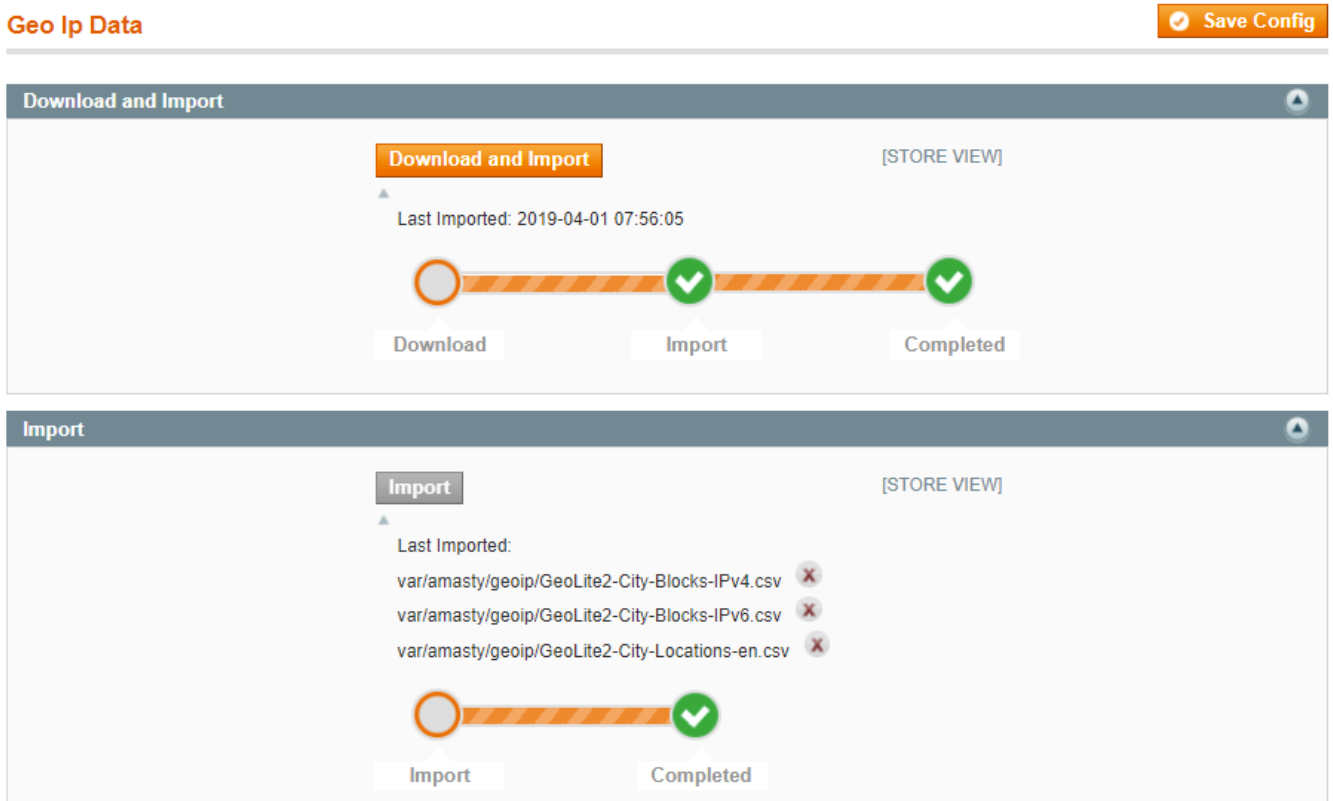
For more details see the [GeoIP Redirect](#) extension page.

Guide for GeoIP Redirect

With **GeoIP Redirect** extension, you can automatically identify customers' location and offer them a proper content: e.g. currency and language. Redirect customers to any relevant information, considering their place of residence.

GeoIP Database Installation

The module requires GeoIP database to be installed in order to detect users' location. Please go to **System → Configuration → Amasty Extensions → Geo IP Data**.



Databases are required for the correct work of the Geo IP Redirect module. Also you need to install [php bcmath](#) or [gmp](#) extension on your server.

You can get the databases automatically or import your own data.

Hit the **Download and Import** button to make the extension download the updated CSV dump file and import it into your database automatically.

To import the files from your own source, use the **Import** option. Path to the files should look like this

(the part 'var/amasty' should be replaced with your folders' names):

```
var/amasty/geoip/GeoLite2-City-Blocks-IPv4.csv  
var/amasty/geoip/GeoLite2-City-Blocks-IPv6.csv  
var/amasty/geoip/GeoLite2-City-Locations-en.csv
```

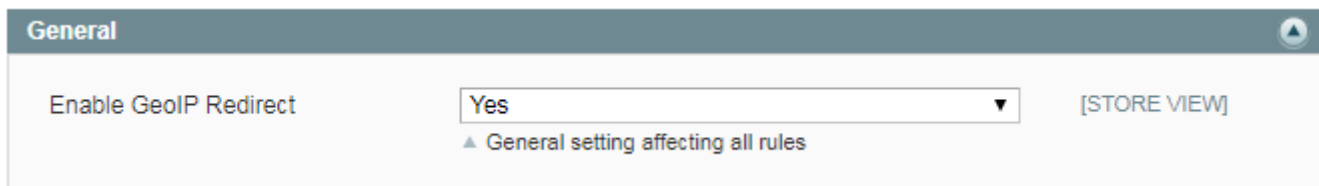
In the Import section, the **Import** button is grayed out by default. It will be available right after you upload the CSV files. The red error notification will switch to green success notification when the import is completed.

If you face any issues when importing the database, please take a look at [this section](#) to find the solution.

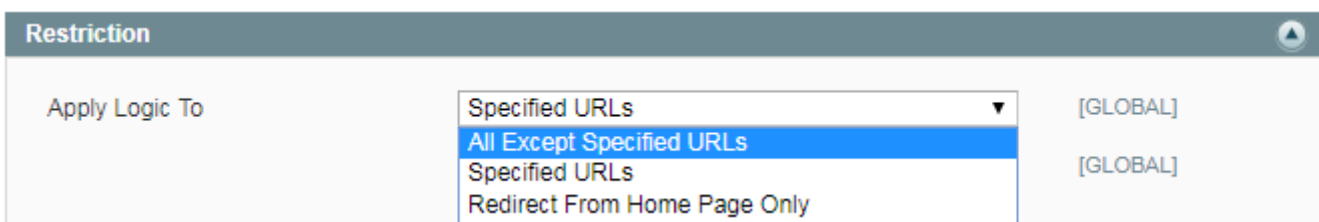
GeoIP Redirect settings

General

To enable GeoIP Redirect extension, go to **System → Configuration → Amasty Extensions → GeoIP Redirect** and set up Yes in this field.



Restriction



Choose which URLs you want to redirect and select appropriate option in the dropdown.

You can redirect all URLs with exceptions, only specified URLs or only from home page.

- **All Except Specified URLs.** Specify exceptions in the *Excepted URLs* field.
- **Specified URLs.** Specify URL's for redirection in the *Accepted URLs* field.
- **Redirect From Home Page Only.** This way the redirection will proceed only from the home page.

Excepted URLs	about-us blog	[GLOBAL]
---------------	------------------	----------

Please specify relative URLs (like *about-us*). Each URL on a separate line. Note: URLs are excluded by partial occurrence. If you specify *blog*, all URLs containing *blog* will be excluded

User Agents to Ignore	googlebot, yahoo, msnbot	[GLOBAL]
Ip to Ignore	10.11.101.100 10.11.201.100 172.20.120.141 172.20.120.212	[GLOBAL]
	▲ Each IP on a separate line.	
First visit redirect only	Yes ▼	[GLOBAL]
	▲ Warning! If you select "No" visitors will be not able to change Store View / currency.	
Redirect Between Websites	Yes ▼	[GLOBAL]

User Agents to Ignore Indicate which user agents you want to ignore. Popular search engines are ignored by default (e.g. *googlebot, yahoo, msnbot*)

Country to Store View Redirect

To enable redirect to particular *Store View* according to user's country set up Yes in this field.

Country to Store View Redirect

Enable Country --> Store View [GLOBAL]

▲ Please switch 'Current Configuration Scope' to a necessary store view to select affected countries.

Current Configuration Scope:

- Default Config
- Default Config**
- Main Website
- Madison Island
- English
- French
- German

GeolP Redirect

General

Enable GeolP Redirect
▲ General setting affecting all rules

Country to Currency Switch

- **Enable Country -> Currency.** To automatically switch currency according to user's location set up Yes in this field.
- Select required **Currency Mapping** for necessary countries.

Country to Currency Switch

Enable Country --> Currency [GLOBAL]

Country to Currency Mapping

Country	Currency	
Canada	Canadian Dollar	Delete
United States	US Dollar	Delete
Mexico	Mexican Peso	Delete
		Add

[STORE VIEW]

This is an example for a US online store, which works with Canada and Mexico.

Country to URL Redirect

Enable Country -> URL. To redirect to particular URL according to user's country, set up Yes in this field. Select required **URL Mapping** for each country.

Country to URL Redirect

Enable Country --> URL: Yes

Country to URL Mapping

Country	Url	
Hungary	en.example.com	Delete
Iceland		
India		
Indonesia		
		Add

How it works

E.g. users with US IP addresses will see US Dollar as a currency.

YOUR LANGUAGE: English ▼ YOUR CURRENCY: US Dollar - USD ▼ WELCOME

MADISON ISLAND

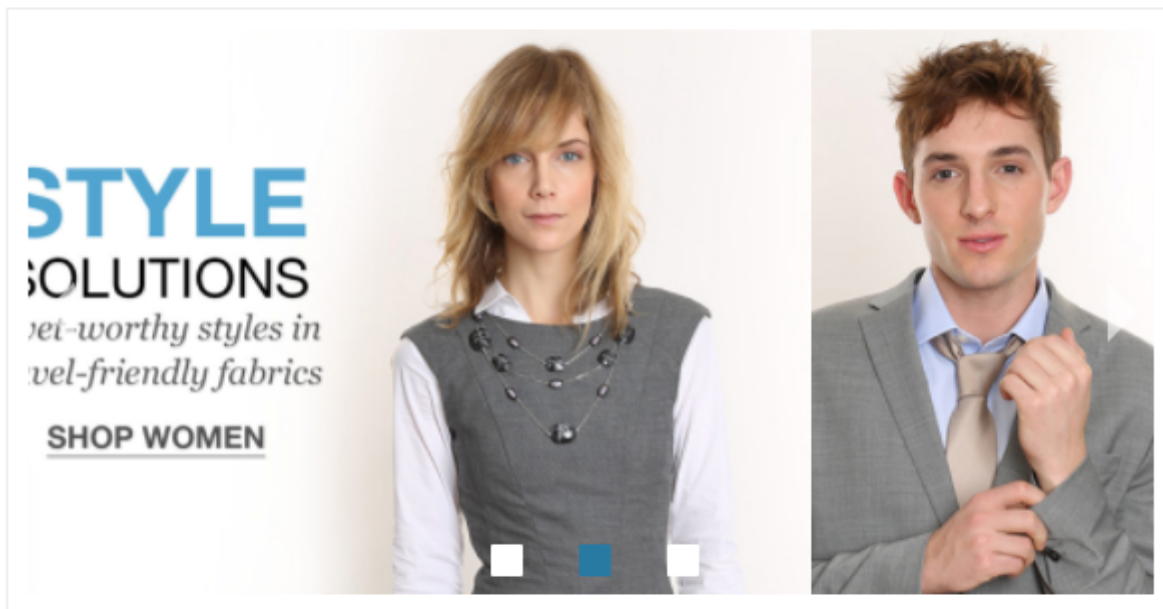
English ▼

Menu

Search

Account

Cart



Troubleshooting

Sometimes, it is unable to complete the database import due to execution time limit of PHP scripts. You can avoid this error by increasing the maximum execution time for your PHP scripts.

You need to set the **max_execution_time** to the number of seconds that all your scripts are allowed to run in your PHP's configuration file. The file location may differ from system to system but in general you need to find the **PHP.INI** file and modify it.

We need to set the value to 18000.

For example:

```
; Maximum execution time of each script, in seconds  
; http://php.net/max-execution-time  
; Note: This directive is hardcoded to 0 for the CLI SAPI  
max_execution_time = 18000
```

Setting the value to 0 means there's no time limit.

You'll have to restart your web server for this solution to work.

From:

<https://stg.amasty.net/docs/> - **Amasty Extensions FAQ**

Permanent link:

https://stg.amasty.net/docs/doku.php?id=magento_1:geoip_redirect



Last update: **2019/07/22 13:44**