

amasty

For more details see the [Automatic Related Products](#) extension page.

Guide for Automatic Related Products

Show related products viewed or purchased together with a specific store item. Let customers easily find relevant products popular among store visitors and raise the number of spontaneous purchases.

- Smart mechanism for automatic product relation
- Use flexible conditions to determine products display
- Set parameters for accurate stats collecting
- Show related products based on views or purchases
- Hide out of stock products

With the extension you'll be able to display special blocks with cross-sells, up-sells and related items based on customer purchase behavior. A specially developed smart algorithm automatically shows necessary items in each particular block.

General Settings

To get the access to the 'Automatic Related Products' settings please go to: **System → Configuration → Automatic Related products**

Automatic Related Products

Save Config

| General | |
|------------------------------|---|
| Query Limit | <input type="text" value="1000"/> [STORE VIEW] ▲ Limit of records in query for period. |
| Exclude Products by Category | <input type="text" value="11, 23"/> [STORE VIEW] ▲ Comma separated IDs of Categories. |

Query Limit - The option lets you indicate the maximal number of queries (product views and purchases) for a specific time period basing on which the module will gather statistical data and display related, up-selling and cross-selling products.

Exclude Products by Category - Specify coma separated category IDs to exclude products assigned to these categories from display.

Up-sells Settings

The Up-sells block is displayed on a product page.

| Up-Sells | | |
|-----------------------------|--|--------------|
| Enabled | <input type="text" value="Yes"/> | [STORE VIEW] |
| Maximum Products Count | <input type="text" value="4"/> | [STORE VIEW] |
| Manually Added Products | <input type="text" value="Replace Manually Added Products"/> | [STORE VIEW] |
| Show In Stock Products Only | <input type="text" value="Yes"/> | [STORE VIEW] |
| Data gathered period | <input type="text" value="1000"/> <small>▲ In days.</small> | [STORE VIEW] |
| Data source | <input type="text" value="Viewed together"/> | [STORE VIEW] |
| Conditions | | [STORE VIEW] |
| Category condition | <input type="text" value="Any"/> | [STORE VIEW] |
| Brand condition | <input type="text" value="Any"/> | [STORE VIEW] |
| Price condition | <input type="text" value="Any"/> | [STORE VIEW] |

Enabled - The option turns on/off the display of up-selling products.

Maximum products count - Here you can specify the maximal number of up-selling items that can be displayed in the up-sells block on a product page.

Manually added products - the option lets you choose among 3 product display modes:

- Replace manually added products (the module will replace all manually added items with the ones generated automatically);
- Display manually added products only (only products manually assigned as up-selling will be displayed);
- Append to manually added products (both manually added and automatically generated products will be shown);

Show in stock products only - If the option is set to 'yes' all out of stock products will be hidden.

Data gathered period - Specify the time period basing on which the module will gather statistical data and display up-selling products.

Data source - the feature defines if products selection will be based on product views, purchases or without them. It has 3 modes:

- Viewed together;
- Bought together;
- Product currently viewed.

The **Product currently viewed** option allows you to promote products without the views/sales history. However, you can set the same conditions.

In case you choose the 'bought together' mode, you'll be able to select an order status to make the product filtering maximally accurate.

| | | |
|-------------|--|--------------|
| Data source | Bought together | [STORE VIEW] |
| Status | <ul style="list-style-type: none">CanceledCancelled OgoneClosedCompleteDeclined OgoneSuspected FraudOn HoldPayment ReviewPayPal Canceled ReversalPayPal Reversed | [STORE VIEW] |

Up-sells Conditions

For up-selling products you can configure condition settings based on categories, brand and price.

| Up-Sells | | |
|-----------------------------|---------------------------------|--------------|
| Enabled | Yes | [STORE VIEW] |
| Maximum Products Count | 4 | [STORE VIEW] |
| Manually Added Products | Replace Manually Added Products | [STORE VIEW] |
| Show In Stock Products Only | Yes | [STORE VIEW] |
| Data gathered period | 1000 | [STORE VIEW] |
| | <small>▲ In days.</small> | |
| Data source | Viewed together | [STORE VIEW] |
| Conditions | | [STORE VIEW] |
| Category condition | Only | [STORE VIEW] |
| Brand condition | Same as | [STORE VIEW] |
| Brand attribute | Manufacturer | [STORE VIEW] |
| Price condition | Any | [STORE VIEW] |

Category condition - Specify from which categories autogenerated products will be selected. The option offers 3 modes:

- Any (products from all categories can be selected as up-sells);
- Only (only items from the same category with the main product will be displayed);
- Exclude from result (products from the same category with the main product will be excluded);

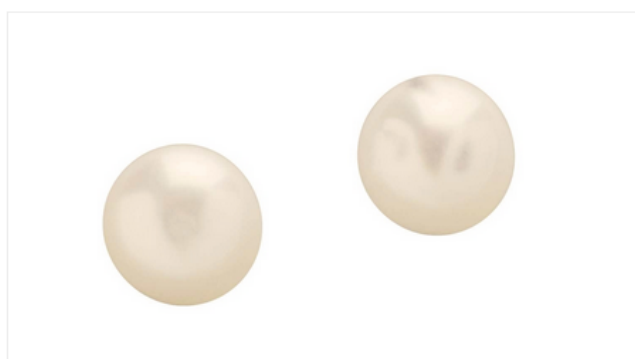
Brand condition - Choose whether to select products of any brand or of the same brand with the chosen product.

Price condition - Price condition defines if auto-generated products can have any price or the same price with the main product. It also possible to choose higher or lower price.

Up-sells Display Example

The up-selling items are displayed on a product page under the main product's description.

HOME / ACCESSORIES / JEWELRY / PEARL STUD EARRINGS



PEARL STUD EARRINGS **\$110.00**

IN STOCK

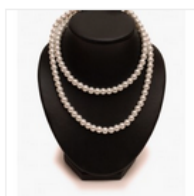
Prim and demure, pearl studs are a cross cultural symbol of style and refinement.

Qty: [ADD TO CART](#)

[Add to Wishlist](#) | [Add to Compare](#) |

| DESCRIPTION | ADDITIONAL INFORMATION | REVIEWS |
|--|------------------------|---------|
| AA& quality 6.5mm pearl. 14K gold post. Made in Indonesia. | | |

YOU MAY ALSO BE INTERESTED IN THE FOLLOWING PRODUCT(S)



PEARL NECKLACE SET
\$310.00



AVIATOR SUNGLASSES
\$295.00



JACKIE O ROUND SUNGLASSES
\$225.00



ELIZABETH KNIT TOP
\$210.00


Related Products Settings

The **Related Products** block is configured the same way as the **Up-sells** block. All related items are shown on a product page.

| Related Products | | |
|-----------------------------|--|--------------|
| Enabled | <input type="text" value="Yes"/> | [STORE VIEW] |
| Maximum Products Count | <input type="text" value="4"/> | [STORE VIEW] |
| Manually Added Products | <input type="text" value="Replace Manually Added Products"/> | [STORE VIEW] |
| Show In Stock Products Only | <input type="text" value="Yes"/> | [STORE VIEW] |
| Data gathered period | <input type="text" value="1000"/> <small>▲ In days.</small> | [STORE VIEW] |
| Data source | <input type="text" value="Viewed together"/> | [STORE VIEW] |
| Conditions | | [STORE VIEW] |
| Category condition | <input type="text" value="Any"/> | [STORE VIEW] |
| Brand condition | <input type="text" value="Any"/> | [STORE VIEW] |
| Price condition | <input type="text" value="Any"/> | [STORE VIEW] |

Related Products Display Example

Related products block is displayed under the 'Add to cart' button

Search entire store here... 

- WOMEN
- MEN
- ACCESSORIES
- HOME & DECOR
- SALE
- VIP

HOME / ACCESSORIES / EYEWEAR / RETRO CHIC EYEGLASSES



RETRO CHIC EYEGLASSES \$295.00

IN STOCK



Madison Island Retro chic lenses are stylish on both men and women.

Qty: [ADD TO CART](#)

- [Add to Wishlist](#)
- [Add to Compare](#)
- 
- 
- 

RELATED PRODUCTS

Check items to add to the cart or [select all](#)


-  AVIATOR SUNGLASSES \$295.00
-  JACKIE O ROUND SUNGLASSES ~~\$295.00~~ \$225.00

MORE VIEWS



Cross-sells settings

The Cross-sells block is displayed on a shopping cart page.

| Cross-Sells  | | |
|---|---|------------------------------|
| Enabled | <input type="text" value="Yes"/> | [STORE VIEW] |
| Maximum Products Count | <input type="text" value="4"/> | [STORE VIEW] |
| Manually Added Products | <input type="text" value="Replace Manually Added Products"/> | [STORE VIEW] |
| Show In Stock Products Only | <input type="text" value="Yes"/> | [STORE VIEW] |
| Data Gathered Period | <input type="text" value="1000"/> <small>▲ In days.</small> | [STORE VIEW] |
| Data Source | <input type="text" value="Viewed together"/> <small>▲ The products selection will be based on the last added to cart product</small> | [STORE VIEW] |

Maximum products count - Here you can specify the maximal number of cross-selling items that can be displayed in the up-sells block on a product page.

Manually added products - the option lets you choose among 3 product display modes:

- Replace manually added products (the module will replace all manually added items with the ones generated automatically);
- Display manually added products only (only products manually assigned as cross-selling will be displayed);
- Append to manually added products(both manually added and automatically generated products will be shown);

Show in stock products only - If the option is set to 'yes' all out of stock products will be hidden.

Data gathered period - Specify the time period basing on which the module will gather statistical data and cross-selling products.


Data source - the feature defines if products selection will be based either on product views, purchases or without them. It has 3 modes:

- Viewed together;
- Bought together;
- Product currently viewed.

Cross-sells Display Example

SHOPPING CART

[PROCEED TO CHECKOUT](#)

| PRODUCT | PRICE | QTY | SUBTOTAL |
|--|---------|-----|----------|
|  <p>CHELSEA TEE SKU: mtkoo3 Color: White Size: L Size: S</p> | \$75.00 | 1 | \$75.00 |

DISCOUNT CODES

[APPLY](#)

ESTIMATE SHIPPING AND TAX

COUNTRY * STATE/PROVINCE *

United States Please select region

CITY ZIP *

[ESTIMATE](#)

[EMPTY CART](#)

[UPDATE SHOPPING CART](#) -OR-

[CONTINUE SHOPPING](#)

| | |
|--------------------|-----------------|
| SUBTOTAL | \$455.00 |
| TAX | \$37.54 |
| GRAND TOTAL | \$492.54 |

[PROCEED TO CHECKOUT](#)

BASED ON YOUR SELECTION, YOU MAY BE INTERESTED IN THE FOLLOWING ITEMS:



THE ESSENTIAL BOOT CUT JEAN
\$140.00



FRENCH CUFF COTTON TWILL OXFORD
\$190.00



LEXINGTON CARDIGAN SWEATER
\$240.00

From: <https://stg.amasty.net/docs/> - **Amasty Extensions FAQ**

Permanent link: https://stg.amasty.net/docs/doku.php?id=magento_1:automatic-related-products



Last update: **2020/05/22 12:17**